

Instructions

Engine Mounts - Short and Wide Design Universal Units

This instruction sheet should be used in conjunction with the workshop manual and proper safety procedures followed.

- Raise vehicle evenly and safely support.

Application - Universal

Never rely on a Jack only

Contents - Engine Mount 91432 x1
- Compression plate x1

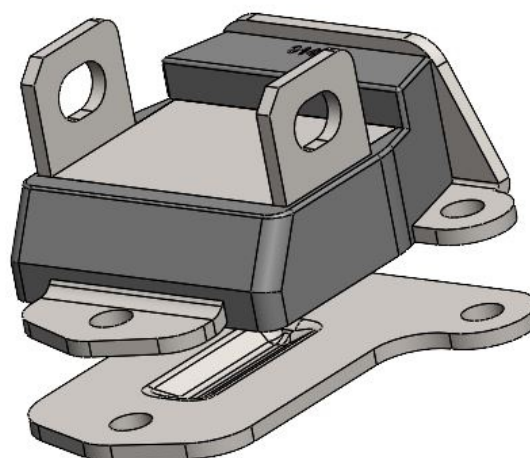
- Best to disconnect battery as the starter motor is near engine mounts.
- Proceed to support engine, by either hanging from a support bracket (hangs from strut towers) or underneath (using Jack and timber) - careful to not damage sump.

Note - careful around exhaust. Best to perform this job when vehicle is cold.

- Proceed to un-bolt old mounts. Best to replace only one mount at a time.
- When bolting up new mount, pay attention to existing bolt lengths. Confirm bolts are long enough for proper engagement. Minimum engagement should be 15mm.
- Tighten the 3 mounting bolts to 40Nm. Tighten the larger main bolt to 60Nm.

Note - when installing new mounts, the engine height may increase - check bonnet clearance.

Place compression plate
between engine block and
engine mount.



N.B: It is recommended that a licenced workshop or tradesperson carry out the above procedure and that workshop manual and relevant safety procedures are followed in addition to the above.